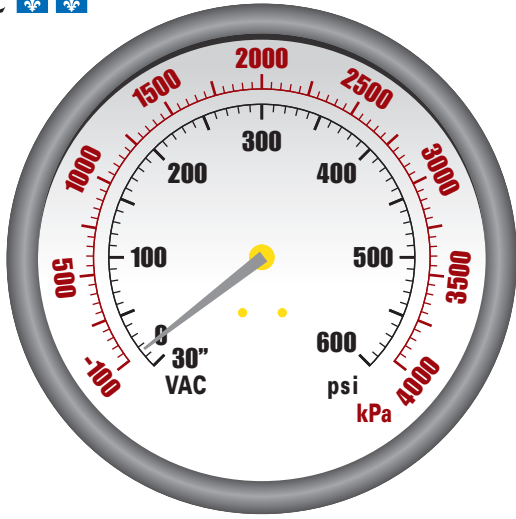
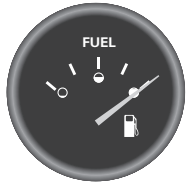
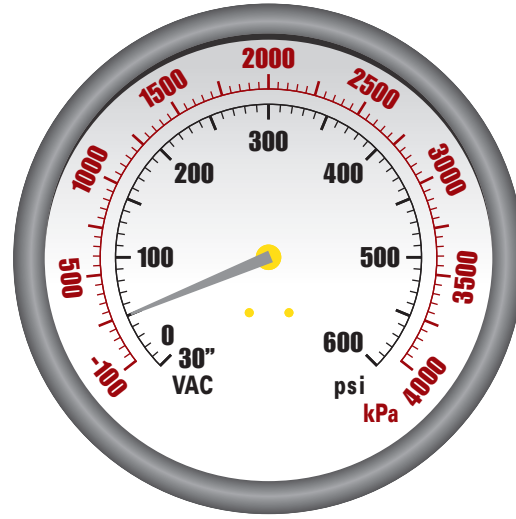


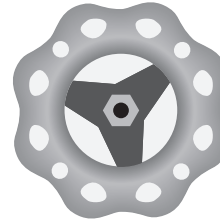
# Fiche B : L'amorçage de la pompe centrifuge (statique)



ENTRÉE MAÎTRE

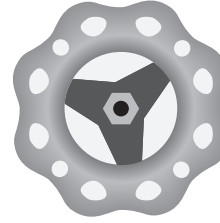


PRESSION MAÎTRE



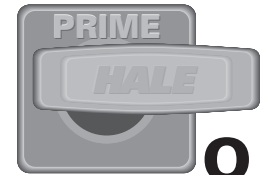
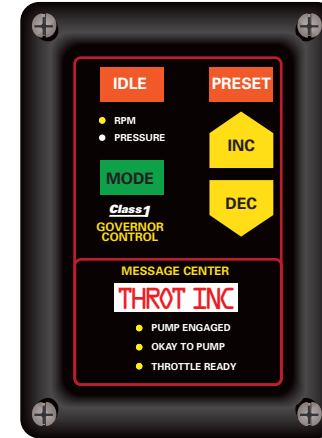
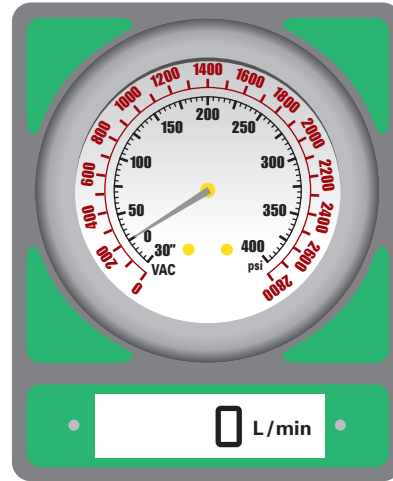
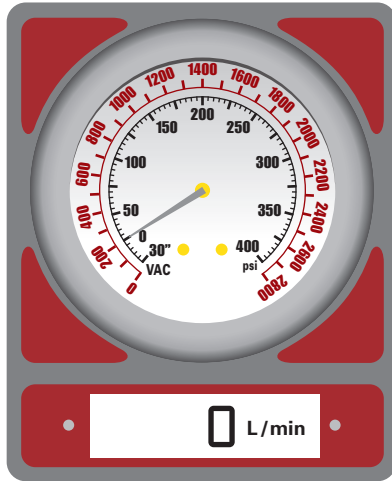
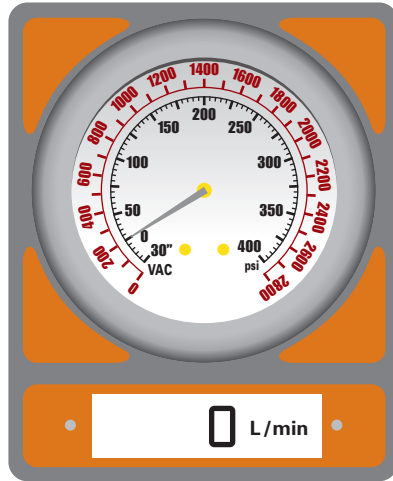
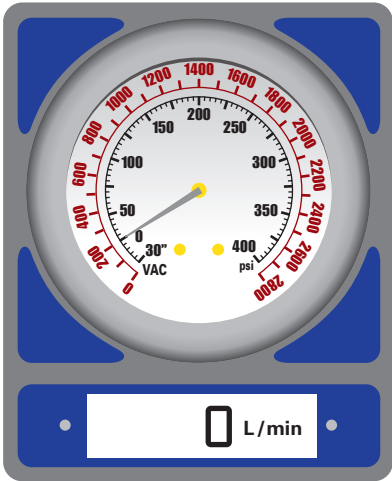
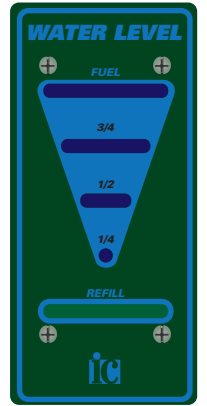
F

REFROIDISSEUR MOTEUR

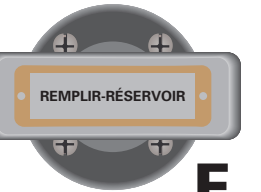


F

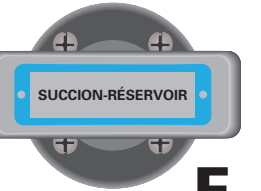
REFROIDISSEUR POMPE



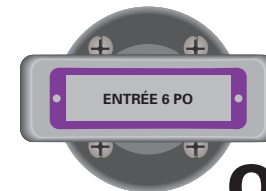
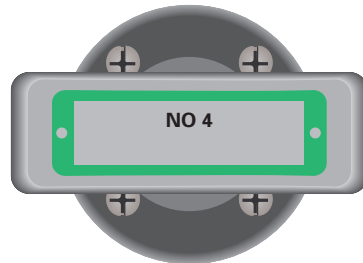
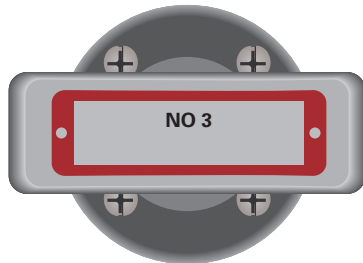
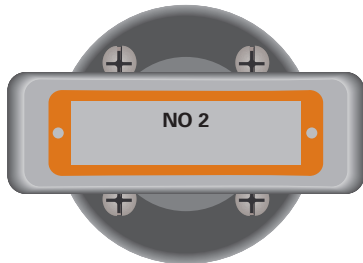
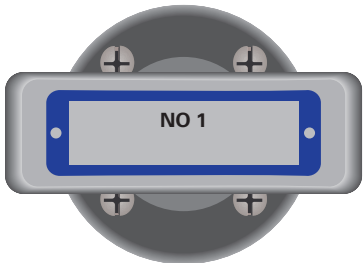
O



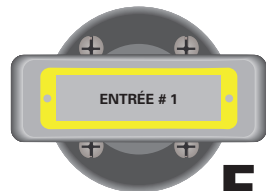
F



F



O



F

□ □ □ □ □

□ □ □ □ □

□ □ □ □ □

□ □ □ □ □